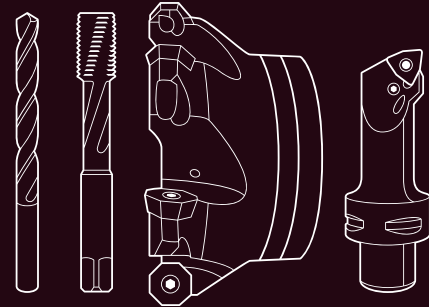


Walter AG

Derendinger Straße 53, 72072 Tübingen
Postfach 2049, 72010 Tübingen
Germany

walter-tools.com



Walter GB Ltd.
Bromsgrove, England
+44 (1527) 839 450, service.uk@walter-tools.com

Walter Kesici Takımlar Sanayi ve Ticaret Ltd. Şti.
Istanbul, Türkiye
+90 (0) 216 528 1900 Pbx, service.tr@walter-tools.com

Walter Wuxi Co. Ltd.
Wuxi, Jiangsu, P.R. China
+86 (510) 853 72199, service.cn@walter-tools.com

Walter AG Singapore Pte. Ltd.
+65 6773 6180, service.sg@walter-tools.com

Walter Korea Ltd.
Anyang-si Gyeonggi-do, Korea
+82 (31) 337 6100, service.kr@walter-tools.com

Walter Tools India Pvt. Ltd.
Pune, India
+91 (20) 3045 7300, service.in@walter-tools.com

Walter (Thailand) Co., Ltd.
Bangkok, 10120, Thailand
+66 2 687 0388, service.th@walter-tools.com

Walter Malaysia Sdn. Bhd.
Selangor D.E., Malaysia
+60 (3) 8023 7748, service.my@walter-tools.com

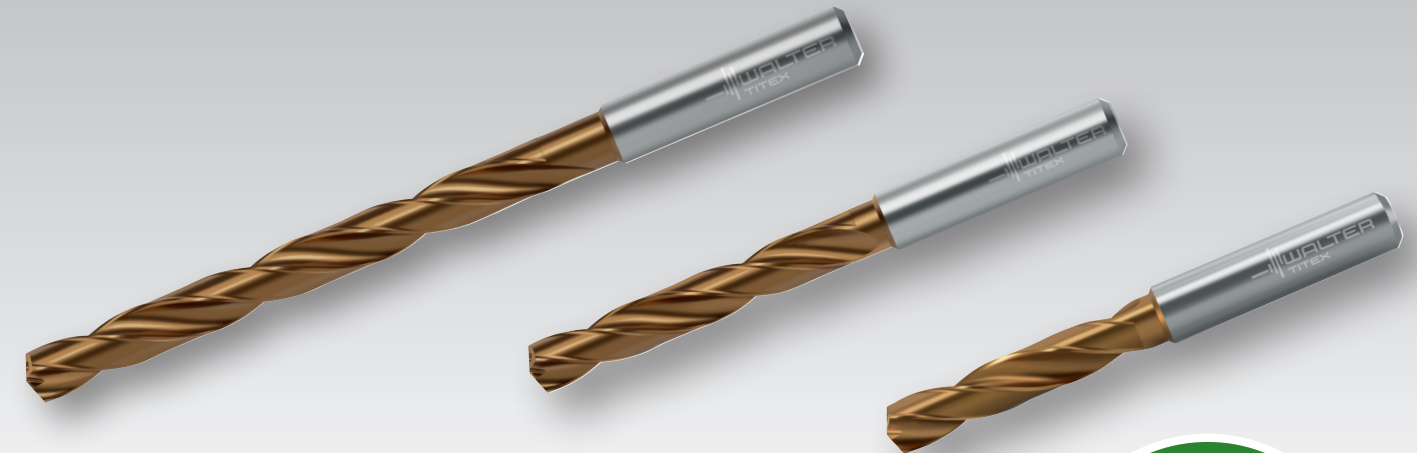
Walter Japan K.K.
Nagoya, Japan
+81 (52) 533 6135, service.jp@walter-tools.com

Walter USA, LLC
Waukesha WI, USA
+1 800-945-5554, service.us@walter-tools.com

Walter Canada
Mississauga, Canada
service.ca@walter-tools.com



The Next Generation of Drilling –
Secure your X-treme Evo now and benefit from
huge savings!



YOUR
SAVINGS
60%

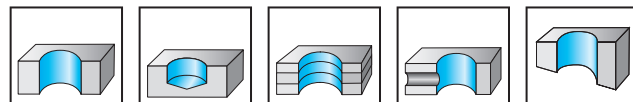
Benefits for you:

- DC160 Advance solid carbide drill family
- High productivity in many different materials
- Fast guidance into the drilled hole
- Excellent positioning accuracy
- Can be used universally

Subject to change without notice – Printed in Germany (03/2019) EN

YOUR SAVINGS
60%

**Solid carbide twist drills
DC160 Advance**



3xDc DIN 6537 K 140°

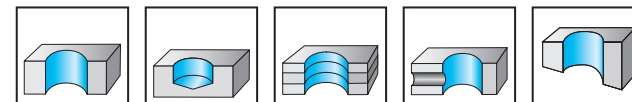
WJ30ET P M K N S H O

Designation	D _c m7 mm	D _c inch	SAP no.	Quantity
DC160-03-03.000A0-BOW-1	3		7765976	
DC160-03-03.100A0-BOW-1	3.1		7765977	
DC160-03-03.175A0-BOW-1	3.175	1/8"	7765978	
DC160-03-03.300A0-BOW-1	3.3		7765979	
DC160-03-03.500A0-BOW-1	3.5		7765980	
DC160-03-03.800A0-BOW-1	3.8		7765981	
DC160-03-04.000A0-BOW-1	4		7765982	
DC160-03-04.100A0-BOW-1	4.1		7765983	
DC160-03-04.200A0-BOW-1	4.2		7765984	
DC160-03-04.300A0-BOW-1	4.3		7765985	
DC160-03-04.500A0-BOW-1	4.5		7765986	
DC160-03-04.650A0-BOW-1	4.65		7765987	
DC160-03-04.800A0-BOW-1	4.8		7765988	
DC160-03-05.000A0-BOW-1	5		7765989	
DC160-03-05.100A0-BOW-1	5.1		7765990	
DC160-03-05.300A0-BOW-1	5.3		7765991	
DC160-03-05.500A0-BOW-1	5.5		7765992	
DC160-03-05.800A0-BOW-1	5.8		7765993	
DC160-03-06.000A0-BOW-1	6		7765994	
DC160-03-06.200A0-BOW-1	6.2		7765995	
DC160-03-06.300A0-BOW-1	6.3		7765996	
DC160-03-06.350A0-BOW-1	6.35	1/4"	7765997	
DC160-03-06.800A0-BOW-1	6.8		7765998	
DC160-03-07.400A0-BOW-1	7.4		7765999	
DC160-03-07.500A0-BOW-1	7.5		7766000	
DC160-03-08.000A0-BOW-1	8		7766001	
DC160-03-08.500A0-BOW-1	8.5		7766002	

Designation	D _c m7 mm	D _c inch	SAP no.	Quantity
DC160-03-08.600A0-BOW-1	8.6		7766003	
DC160-03-08.800A0-BOW-1	8.8		7766004	
DC160-03-09.000A0-BOW-1	9		7766005	
DC160-03-09.500A0-BOW-1	9.5		7766006	
DC160-03-09.600A0-BOW-1	9.6		7766007	
DC160-03-09.700A0-BOW-1	9.7		7766008	
DC160-03-10.000A0-BOW-1	10		7766009	
DC160-03-10.200A0-BOW-1	10.2		7766010	
DC160-03-10.500A0-BOW-1	10.5		7766011	
DC160-03-10.800A0-BOW-1	10.8		7766012	
DC160-03-11.000A0-BOW-1	11		7766013	
DC160-03-11.500A0-BOW-1	11.5		7766014	
DC160-03-11.800A0-BOW-1	11.8		7766015	
DC160-03-12.000A0-BOW-1	12		7766016	
DC160-03-12.500A0-BOW-1	12.5		7766017	
DC160-03-12.700A0-BOW-1	12.7	1/2"	7766018	
DC160-03-12.800A0-BOW-1	12.8		7766019	
DC160-03-13.000A0-BOW-1	13		7766020	
DC160-03-13.100A0-BOW-1	13.1		7766021	
DC160-03-14.000A0-BOW-1	14		7766022	
DC160-03-14.500A0-BOW-1	14.5		7766023	
DC160-03-15.000A0-BOW-1	15		7766024	
DC160-03-16.000A0-BOW-1	16		7766025	
DC160-03-17.000A0-BOW-1	17		7766026	
DC160-03-17.500A0-BOW-1	17.5		7766027	
DC160-03-18.000A0-BOW-1	18		7766028	
DC160-03-20.000A0-BOW-1	20		7766029	

YOUR SAVINGS
60%

**Solid carbide drill with coolant-through
DC160 Advance**



5xDc DIN 6537 L 140°

WJ30ET P M K N S H O

Designation	D _c m7 mm	D _c inch	SAP no.	Quantity
DC160-05-03.000A1-BOW-1	3		7766030	
DC160-05-03.100A1-BOW-1	3.1		7766031	
DC160-05-03.200A1-BOW-1	3.2		7766032	
DC160-05-03.300A1-BOW-1	3.3		7766033	
DC160-05-03.400A1-BOW-1	3.4		7766034	
DC160-05-03.500A1-BOW-1	3.5		7766035	
DC160-05-03.700A1-BOW-1	3.7		7766036	
DC160-05-03.800A1-BOW-1	3.8		7766037	
DC160-05-03.900A1-BOW-1	3.9		7766038	
DC160-05-04.000A1-BOW-1	4		7766039	
DC160-05-04.200A1-BOW-1	4.2		7766040	
DC160-05-04.300A1-BOW-1	4.3		7766041	
DC160-05-04.500A1-BOW-1	4.5		7766042	
DC160-05-04.600A1-BOW-1	4.6		7766043	
DC160-05-04.650A1-BOW-1	4.65		7766044	
DC160-05-04.763A1-BOW-1	4.763	3/16"	7766045	
DC160-05-04.800A1-BOW-1	4.8		7766046	
DC160-05-04.900A1-BOW-1	4.9		7766047	
DC160-05-05.000A1-BOW-1	5		7766048	
DC160-05-05.100A1-BOW-1	5.1		7766049	
DC160-05-05.200A1-BOW-1	5.2		7766050	
DC160-05-05.300A1-BOW-1	5.3		7766051	
DC160-05-05.500A1-BOW-1	5.5		7766052	
DC160-05-05.550A1-BOW-1	5.55		7766053	
DC160-05-05.556A1-BOW-1	5.556	7/32"	7766054	
DC160-05-05.600A1-BOW-1	5.6		7766055	
DC160-05-05.700A1-BOW-1	5.7		7766056	
DC160-05-05.800A1-BOW-1	5.8		7766057	

Designation	D _c m7 mm	D _c inch	SAP no.	Quantity
DC160-05-05.900A1-BOW-1	5.9		7766058	
DC160-05-06.000A1-BOW-1	6		7766059	
DC160-05-06.100A1-BOW-1	6.1		7766060	
DC160-05-06.200A1-BOW-1	6.2		7766061	
DC160-05-06.300A1-BOW-1	6.3		7766062	
DC160-05-06.350A1-BOW-1	6.35	1/4"	7766063	
DC160-05-06.500A1-BOW-1	6.5		7766064	
DC160-05-06.600A1-BOW-1	6.6		7766065	
DC160-05-06.700A1-BOW-1	6.7		7766066	
DC160-05-06.747A1-BOW-1	6.747	17/64"	7766067	
DC160-05-06.800A1-BOW-1	6.8		7766068	
DC160-05-06.900A1-BOW-1	6.9		7766069	
DC160-05-07.000A1-BOW-1	7		7766070	
DC160-05-07.400A1-BOW-1	7.4		7766071	
DC160-05-07.500A1-BOW-1	7.5		7766072	
DC160-05-07.541A1-BOW-1	7.541	19/64"	7766073	
DC160-05-07.800A1-BOW-1	7.8		7766074	
DC160-05-07.938A1-BOW-1	7.938	5/16"	7766075	
DC160-05-08.000A1-BOW-1	8		7766076	
DC160-05-08.100A1-BOW-1	8.1		7766077	
DC160-05-08.200A1-BOW-1	8.2		7766078	
DC160-05-08.300A1-BOW-1	8.3		7766079	
DC160-05-08.500A1-BOW-1	8.5		7766080	
DC160-05-08.600A1-BOW-1	8.6		7766081	
DC160-05-08.700A1-BOW-1	8.7		7766082	
DC160-05-08.731A1-BOW-1	8.731	11/32"	7766083	
DC160-05-08.800A1-BOW-1	8.8		7766084	
DC160-05-09.000A1-BOW-1	9		7766085	

Sender

Company

Name

Building no./street name

Town/postcode

Date

Signature

Use this form to fax your order now.

In collaboration with:

walter-tools.com

Planned start date is 23.09.2019. Offer validity period: Eight weeks or while stocks last. Please allow three to five working days for delivery. Products on special offer cannot be exchanged. Illustrations show similar products. Subject to change without notice.

Sender

Company

Name

Building no./street name

Town/postcode

Date

Signature

Planned start date is 23.09.2019. Offer validity period: Eight weeks or while stocks last. Please allow three to five working days for delivery. Products on special offer cannot be exchanged. Illustrations show similar products. Subject to change without notice.

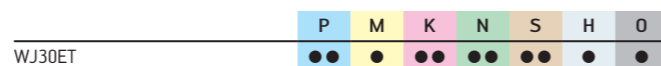
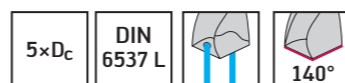
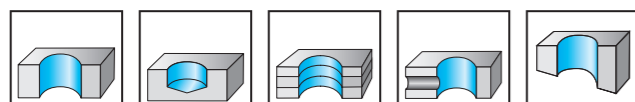
Use this form to fax your order now.

In collaboration with:

walter-tools.com

YOUR SAVINGS
60%

**Solid carbide drill with coolant-through
DC160 Advance**

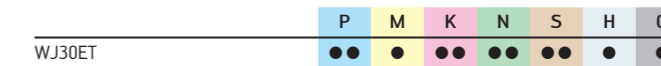
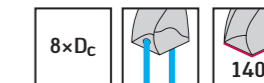
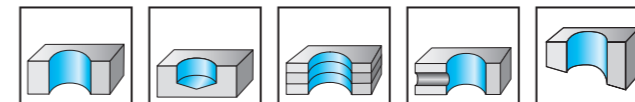


Designation	D _c m7 mm	D _c inch	SAP no.	Quantity
DC160-05-09.300A1-BOW-1	9.3		7766086	
DC160-05-09.400A1-BOW-1	9.4		7766087	
DC160-05-09.500A1-BOW-1	9.5		7766088	
DC160-05-09.525A1-BOW-1	9.525	3/8"	7766089	
DC160-05-09.700A1-BOW-1	9.7		7766090	
DC160-05-09.800A1-BOW-1	9.8		7766091	
DC160-05-09.922A1-BOW-1	9.922	25/64"	7766092	
DC160-05-10.000A1-BOW-1	10		7766093	
DC160-05-10.100A1-BOW-1	10.1		7766094	
DC160-05-10.200A1-BOW-1	10.2		7766095	
DC160-05-10.300A1-BOW-1	10.3		7766096	
DC160-05-10.319A1-BOW-1	10.319	13/32"	7766097	
DC160-05-10.500A1-BOW-1	10.5		7766098	
DC160-05-10.716A1-BOW-1	10.716	27/64"	7766099	
DC160-05-10.800A1-BOW-1	10.8		7766100	
DC160-05-11.000A1-BOW-1	11		7766101	
DC160-05-11.100A1-BOW-1	11.1		7766102	
DC160-05-11.113A1-BOW-1	11.113	7/16"	7766103	
DC160-05-11.200A1-BOW-1	11.2		7766104	
DC160-05-11.500A1-BOW-1	11.5		7766105	
DC160-05-11.800A1-BOW-1	11.8		7766106	
DC160-05-12.000A1-BOW-1	12		7766107	
DC160-05-12.300A1-BOW-1	12.3		7766108	
DC160-05-12.500A1-BOW-1	12.5		7766109	
DC160-05-12.700A1-BOW-1	12.7	1/2"	7766110	
DC160-05-13.000A1-BOW-1	13		7766111	
DC160-05-13.494A1-BOW-1	13.494	17/32"	7766112	
DC160-05-13.500A1-BOW-1	13.5		7766113	

Designation	D _c m7 mm	D _c inch	SAP no.	Quantity
DC160-05-13.800A1-BOW-1	13.8		7766114	
DC160-05-14.000A1-BOW-1	14		7766115	
DC160-05-14.288A1-BOW-1	14.288	9/16"	7766116	
DC160-05-14.500A1-BOW-1	14.5		7766117	
DC160-05-15.000A1-BOW-1	15		7766118	
DC160-05-15.100A1-BOW-1	15.1		7766119	
DC160-05-15.500A1-BOW-1	15.5		7766120	
DC160-05-16.000A1-BOW-1	16		7766121	
DC160-05-16.100A1-BOW-1	16.1		7766122	
DC160-05-16.500A1-BOW-1	16.5		7766123	
DC160-05-17.000A1-BOW-1	17		7766124	
DC160-05-17.500A1-BOW-1	17.5		7766125	
DC160-05-18.000A1-BOW-1	18		7766126	
DC160-05-18.500A1-BOW-1	18.5		7766127	
DC160-05-19.000A1-BOW-1	19		7766128	
DC160-05-19.500A1-BOW-1	19.5		7766129	
DC160-05-20.000A1-BOW-1	20		7766130	
DC160-05-20.500A1-BOW-1	20.5		7766131	
DC160-05-21.000A1-BOW-1	21		7766132	
DC160-05-22.000A1-BOW-1	22		7766133	
DC160-05-24.000A1-BOW-1	24		7766134	
DC160-05-25.000A1-BOW-1	25		7766135	

YOUR SAVINGS
60%

**Solid carbide drill with coolant-through
DC160 Advance**



Designation	D _c m7 mm	D _c inch	SAP no.	Quantity
DC160-08-03.000A1-BOW-1	3		7766136	
DC160-08-03.175A1-BOW-1	3.175	1/8"	7766137	
DC160-08-03.300A1-BOW-1	3.3		7766138	
DC160-08-04.000A1-BOW-1	4		7766139	
DC160-08-04.500A1-BOW-1	4.5		7766140	
DC160-08-05.000A1-BOW-1	5		7766141	
DC160-08-05.100A1-BOW-1	5.1		7766142	
DC160-08-06.000A1-BOW-1	6		7766143	
DC160-08-06.500A1-BOW-1	6.5		7766144	
DC160-08-06.800A1-BOW-1	6.8		7766145	
DC160-08-07.000A1-BOW-1	7		7766146	
DC160-08-07.938A1-BOW-1	7.938	5/16"	7766147	
DC160-08-08.000A1-BOW-1	8		7766148	
DC160-08-08.500A1-BOW-1	8.5		7766149	
DC160-08-09.000A1-BOW-1	9		7766150	
DC160-08-09.300A1-BOW-1	9.3		7766151	
DC160-08-09.525A1-BOW-1	9.525	3/8"	7766152	
DC160-08-10.000A1-BOW-1	10		7766153	
DC160-08-10.200A1-BOW-1	10.2		7766154	
DC160-08-10.319A1-BOW-1	10.319	13/32"	7766155	
DC160-08-10.500A1-BOW-1	10.5		7766156	
DC160-08-11.000A1-BOW-1	11		7766157	
DC160-08-11.800A1-BOW-1	11.8		7766158	
DC160-08-12.000A1-BOW-1	12		7766159	
DC160-08-12.500A1-BOW-1	12.5		7766160	
DC160-08-12.700A1-BOW-1	12.7	1/2"	7766161	
DC160-08-13.000A1-BOW-1	13		7766162	
DC160-08-14.000A1-BOW-1	14		7766163	

Designation	D _c m7 mm	D _c inch	SAP no.	Quantity
DC160-08-15.000A1-BOW-1	15		7766164	
DC160-08-16.000A1-BOW-1	16		7766165	

Sender

Company

Name

Building no./street name

Town/postcode

Date

Signature

Use this form to fax your order now.

In collaboration with:

walter-tools.com

Planned start date is 23.09.2019. Offer validity period: Eight weeks or while stocks last. Please allow three to five working days for delivery. Products on special offer cannot be exchanged. Illustrations show similar products. Subject to change without notice.

Sender

Company

Name

Building no./street name

Town/postcode

Date

Signature

Use this form to fax your order now.

In collaboration with:

walter-tools.com

Planned start date is 23.09.2019. Offer validity period: Eight weeks or while stocks last. Please allow three to five working days for delivery. Products on special offer cannot be exchanged. Illustrations show similar products. Subject to change without notice.

